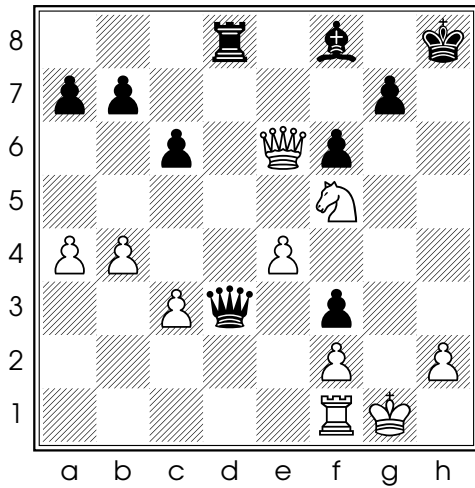
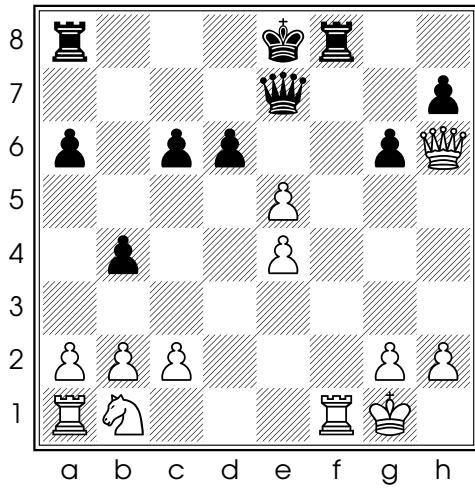


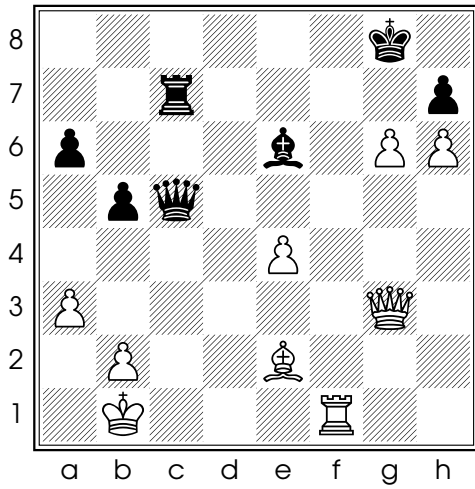
Diag. 1 - Trait aux Noirs



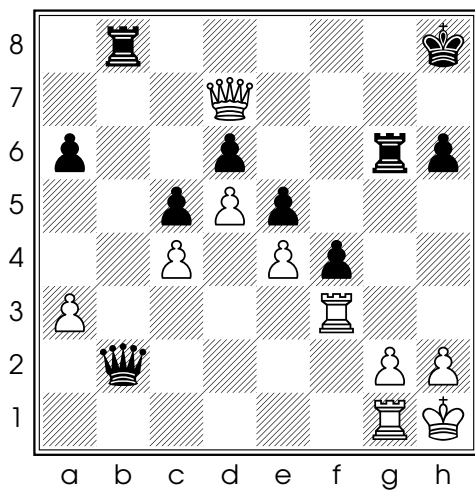
Diag. 2 - Trait aux Noirs



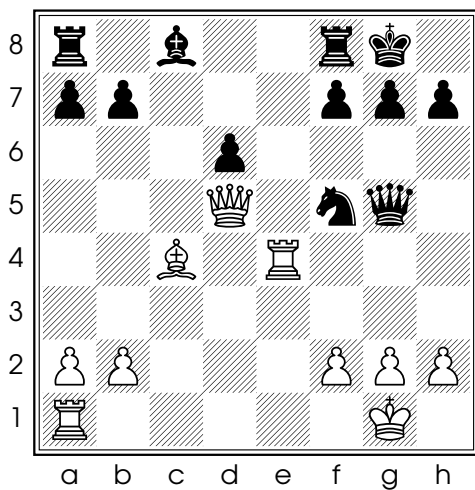
Diag. 3 - Trait aux Noirs



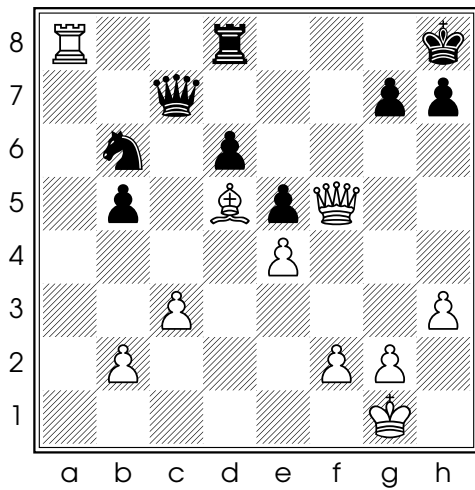
Diag. 4 - Trait aux Noirs



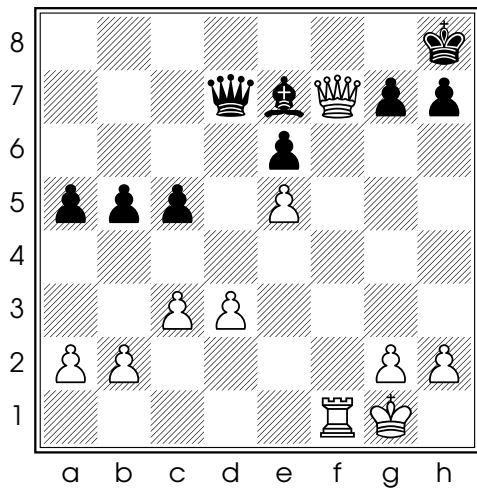
Diag. 5 - Trait aux Noirs



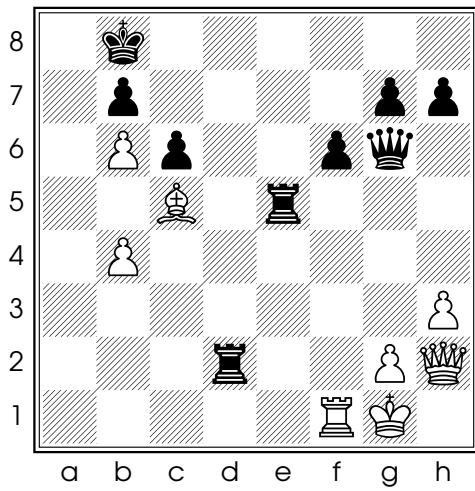
Diag. 6 - Trait aux Blancs



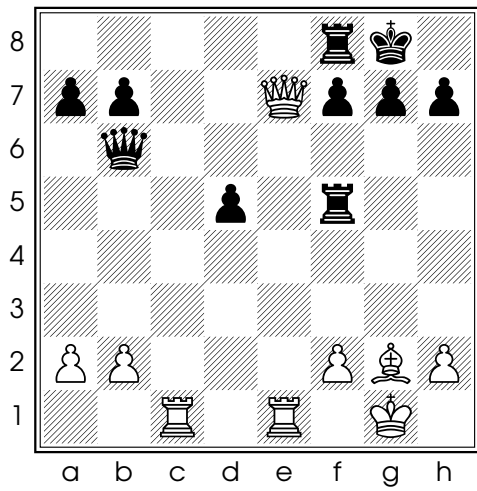
Diag. 7 - Trait aux Blancs



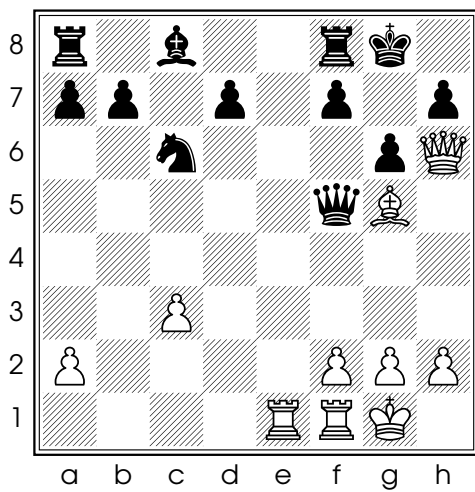
Diag. 8 - Trait aux Blancs



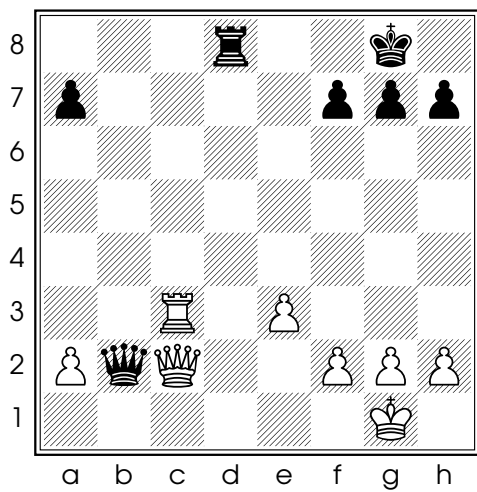
Diag. 9 - Trait aux Blancs



Diag. 10 - Trait aux Blancs



Diag. 11 - Trait aux Blancs



Diag. 12 - Trait aux Noirs

Diagramme 1

34...♔d1+ 35.♖xd1 ♖xd1#

Gulnar Mammadova - Olga Girya, championnat d'Europe féminin des moins de 10 ans, 2001

Diagramme 2

32...♔xf1+ 33.♕xf1 ♖d1#

Benjamin Blumenfeld - Alexander Alekhine, Moscou 1908

Diagramme 3

21...♔a7+ 22.♖f2 (22.♕h1 ♖xf1#) ♔xf2+ 23.♕h1 ♔f1#

Aleksandar Matanovic - Jan Hein Donner, Hoogovens tournament, 1965

Diagramme 4

38...♔c2+ 39.♕a1 ♔c1+ 40.♖xc1 ♖xc1#

Sergey Karjakin - Vassily Ivanchuk, Tal Memorial (blitz), Moscou 2008

Diagramme 5

40...♔xg2+ 41.♖xg2 ♖b1+ 42.♖f1 ♖xf1+ 43.♖g1 ♖xg1#

Lev Polugaevsky - Johannes Eising, Solingen 1974

Diagramme 6

17.♔xf7+ 1-0 Si 17...♖xf7 18.♖e8# , et si 17...♕h8 18.♔xf8#

Max Euwe - Siegfried Bernard van Mindeno, Amsterdam 1927

Diagramme 7

28.♔f8+ ♖xf8 29.♖xf8#

Pablo Ricardi - Gilberto Milos, Buenos Aires 2001

Diagramme 8

26.♔f8+ ♕xf8 27.♖xf8#

Zsuzsa Markhot - Sanja Arslanagic, championnat de Monde cadets 1997

Diagramme 9

36.♔xe5+ 1-0 Si 36...fxe5 37.♖f8+ conduit à un mat du couloir.

Alexander Alekhine - Samuel Reshevski, Kemerli 1937

Diagramme 10

26.♔xf8+ ♕xf8 27.♖c8+ ♔d8 28.♖xd8#

Tal Haimovich - Viacheslav Slovineanu, Panormo 2001

Diagramme 11

17. ♔xf8+ ♚xf8 18. ♘h6+ ♚g8 19. ♖e8#

Judit Polgar - Pavlina Chilingirova, Olympiades 1988

Diagramme **12**

30... ♔a1+ 31. ♔c1 ♖d1+ 32. ♔xd1 ♔xd1#

Ossip Bernstein - Jose Raul Capablanca, Moscou 1914 (analyse)